

WEDDINGS

venue spaces

CLIFFSIDE ROOM

This unique and intimate space offers breathtaking views of Snoqualmie Falls and the surrounding river valley. Step out onto the balcony and hear the roar of the falls to experience the Northwest at its finest. Ideal for receptions after a ceremony on the Hidden Terrace.

HIDDEN TERRACE

Say your "I Do's" at the crest of the Falls. This breathtaking one-of-a-kind space is as close as you can get to this iconic Pacific Northwest landmark. A clear sliding panel allows the breeze and roar of the falls to be a part of your unique ceremony.

FALLS TERRACE

This is the quintessential Northwest wedding experience. A spacious patio offer sweeping views of the Snoqualmie River Valley and creates a perfect backdrop for your wedding ceremony, especially under a customized tent. Inside, guests enjoy the ambiance created by a grand wood-burning fireplace and a stunning glass teardrop chandelier.

THE ATTIC

This intimate space with a unique atmosphere features floor to ceiling windows offering some of the best views of Snoqualmie Falls. Specific to brunch style weddings or small receptions this space offers gorgeous natural woodwork and provides a warm, romantic setting.

SALISH BALLROOM

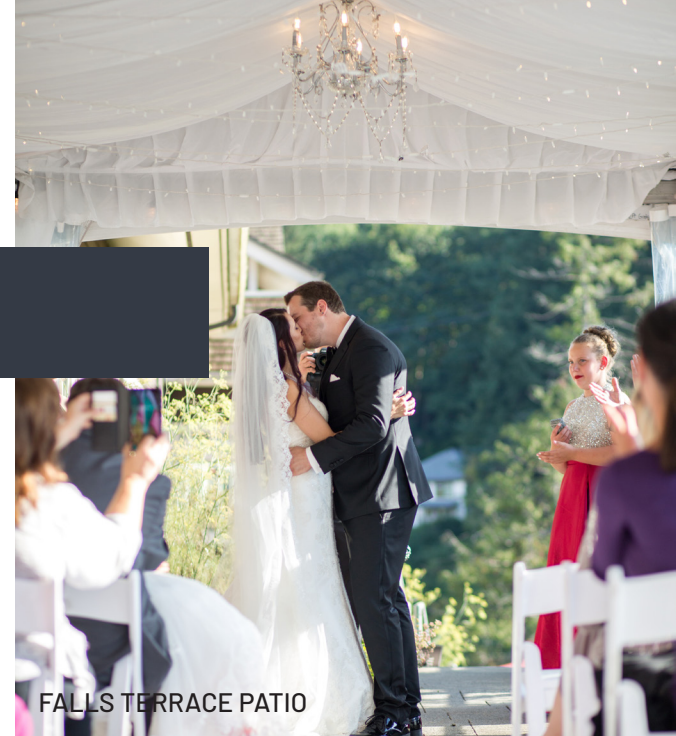
This lavish space features a neutral palate accented by beveled mirror panels and modern chandeliers, creating the ultimate environment for large ceremonies and receptions. An enchanting staircase and spacious foyer ensure your grand entrance will be unforgeable.

THE WINE CELLAR

The Wine Cellar Room offers a perfect setting for a warm and romantic candlelit ceremony.

CHEF'S STUDIO

The Chef's Studio is a unique culinary-themed semiprivate space, with natural light from floor to ceiling windows and access to a small private patio with views of the Falls and Snoqualmie Valley. This space is ideal for intimate dinners, receptions, and brunches the morning after saying 'I do.'



FALLS TERRACE PATIO



HIDDEN TERRACE

VENUE SPACES

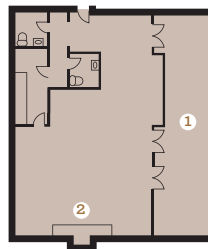
capacity and floorplans



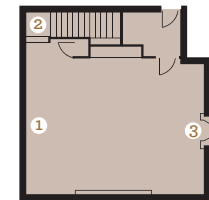
ROOM	SQ. FT.	DIMENSIONS	CEREMONY	COCKTAIL RECEPTION	BUFFET	PLATED
Salish Ballroom	2,052	35 x 58	125	160	125	125
Falls Terrace	1,000	29 x 31	84	80	68	64
The Attic	1,520	38 x 40	<i>ask for details</i>	<i>ask for details</i>	<i>ask for details</i>	<i>ask for details</i>
The Wine Cellar	600	30 x 20	40	35	32	40
Cliffside Room	400	30 x 12	30	24	18	24
Hidden Terrace	440	40 x 11	40	28	28	28
Chef's Studio	200	11 x 18	<i>ask for details</i>	24	-	12



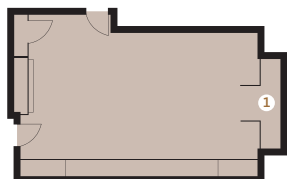
SALISH BALLROOM
Second Floor
1. Ballroom foyer
2. Elevator



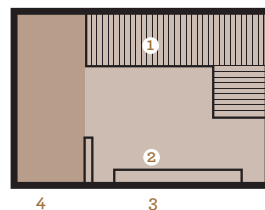
FALLS TERRACE
Third Floor
1. Patio overlooking Snoqualmie Valley
2. Wood burning fireplace



THE WINE CELLAR
Second Floor
1. Whiteboard and pull-down screen
2. Stairs to Lobby
3. Wood-burning fireplace



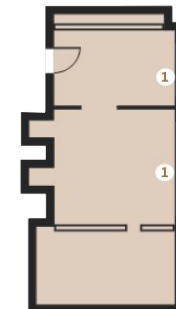
CLIFFSIDE ROOM
Fourth Floor
1. Balcony overlooking Snoqualmie Falls



CHEF'S STUDIO
First Floor
1. Stairs to The Dining Room
2. Retractable Glass Doors
3. Patio overlooking Snoqualmie Falls



HIDDEN TERRACE
First Floor
1. Guest Entrance
2. Snoqualmie Falls



THE ATTIC
Fourth Floor
1. Large windows with natural light overlooking Snoqualmie Falls
2. Lounge space