

MEETINGS & EVENTS

venue spaces

CLIFFSIDE ROOM

Perfect for small meetings, the Cliffside Room has vaulted ceilings and French doors that open onto an intimate balcony, providing a breath of fresh air and inspiring view fro the top of Snoqualmie Falls.

FALLS TERRACE

This spacious room is situated on a terrace overlooking the river, with one of the best outdoor views from the lodge. It has a woodburning fireplace, naturally-lit picture windows and private restrooms.

SALISH BALLROOM

The Salish Ballroom features an ideal foyer entrance for registration, refreshment breaks or pre-function cocktails and private bathrooms. Elegant and efficient, it's the perfect choice for large groups.

THE WINE CELLAR

Adorned with a wood-burning fireplace, the Wine Cellar Room offers uniquely Salish charm - the perfect spot for a strategy session with your team or an intimate celebration.

HIDDEN TERRACE

This breathtaking one-of-a-kind space is as close as you can get to this iconic Pacific Northwest landmark. A clear sliding panel allows the breeze and roar of the falls to be a part of your unique event.

CHEF'S STUDIO

The Chef's Studio is a unique culinary-themed semiprivate space, with natural light from floor to ceiling windows and access to a small private patio with views of the Falls and Snoqualmie Valley. This space is ideal for intimate dinners, receptions, and teambuilding.



VENUE SPACES

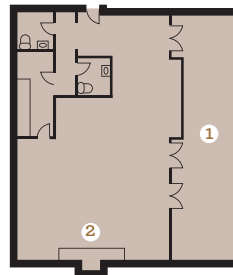
capacity and floorplans

ROOM	SQ. FT.	DIMENSIONS	CONFERENCE	U-SHAPE	HOLLOW SQUARE	THEATRE	CLASSROOM	BUFFET	PLATED
Salish Ballroom	2,052	35 x 58	40	60	72	180	72	125	125
Falls Terrace	1,000	29 x 31	24	27	36	84	36	68	64
The Wine Cellar	600	24 x 23	18	24	24	40	24	32	40
Cliffside Room	400	30 x 12	18	-	-	30	-	18	24
Chef's Studio	200	11 x 18	12	-	-	-	-	-	12
Hidden Terrace	440	40 x 11	28	-	-	40	-	28	18



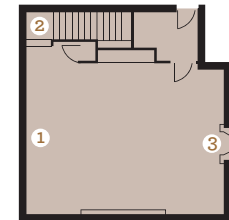
SALISH BALLROOM
Second Floor

1. Ballroom foyer
2. Elevator



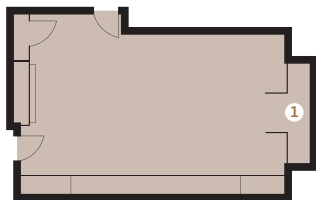
FALLS TERRACE
Third Floor

1. Patio overlooking Snoqualmie Valley
2. Wood burning fireplace



WINE CELLAR ROOM
Second Floor

1. Whiteboard and pull-down screen
2. Stairs to Lobby
3. Wood-burning fireplace



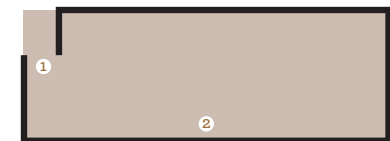
CLIFFSIDE ROOM
Fourth Floor

1. Balcony overlooking Snoqualmie Falls



CHEF'S STUDIO
First Floor

1. Stairs to The Dining Room
2. Retractable Glass Doors
3. Patio overlooking Snoqualmie Falls



HIDDEN TERRACE

- First Floor
1. Guest Entrance
 2. Snoqualmie Falls