

JOHN T. WILLIAMS'S LEGACY
10 YEARS LATER

BILL GATES, REBOOTED
RECENTLY RETIRED. FOREVER RELEVANT.

NEW LOCAL LIT
FALL'S CAN'T-MISS READING LIST

Seattle Met

THE COMPLETE GUIDE TO

A FALL UNLIKE ANY OTHER

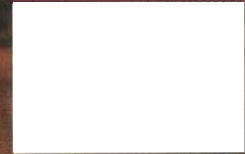
WINE COUNTRY

How to get away, without going far

STAYCATIONS

Seattle's hotel boom isn't just for visitors

DISPLAY UNTIL 12:00
FALL 2020 SEATTLEMET.COM



Hotel Horde

The Staycation Cure

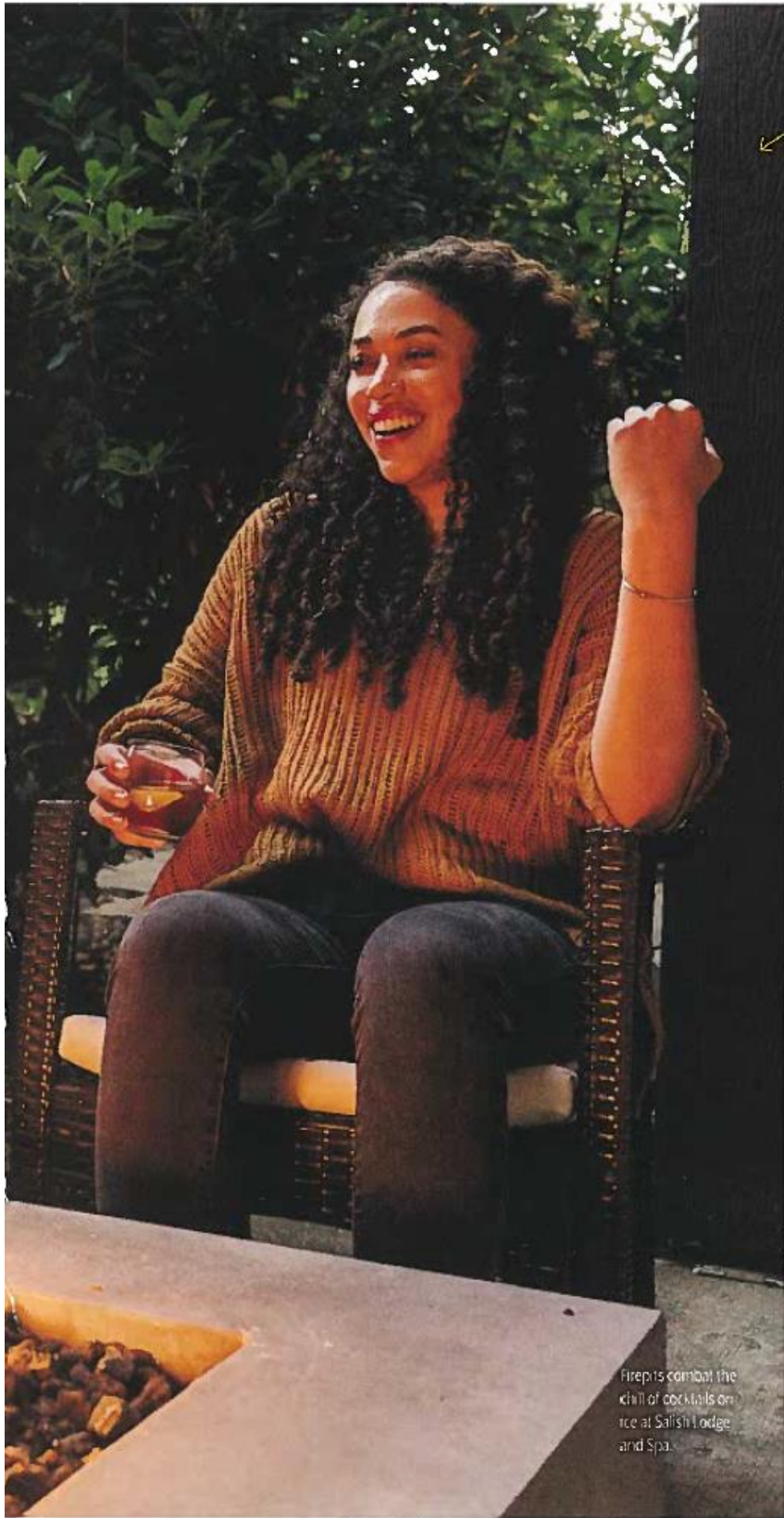
We've stayed home for months, and far-flung vacations aren't in the cards yet. Luckily the city has local turndown service—and rooftop decks and infinity pools—to spare. Leaving the house never felt so luxe.

S'mores with a cocktail chaser at Salish Lodge and Spa.



Explore Staycations





Firepits combat the chill of cocktails on the terrace at Salish Lodge and Spa.

NEIGHBORHOOD GROOVES AND EASTSIDE ESCAPES

SALISH LODGE AND SPA

One doesn't have to be a *Twin Peaks* fan to appreciate a hotel perched over a roaring waterfall, though those who did watch the series will appreciate the spooky grandeur of the show's signature setting. Snoqualmie's noted special-occasion vacation spot has long gone for a warm, woodsy feel with fireplaces and a signature breakfast that includes drizzling honey from their own bees onto fresh-baked biscuits. With walking trails outside and a spa inside, it's a place where you'd never need to venture into nearby North Bend, though its classic downtown is worth a stroll. salishlodge.com

Heathman Hotel

One of the most colorful hotels on the Eastside, Kirkland's boutique property manages to fold thoughtful touches into what could otherwise feel like a big-chain experience (it's not). A bed menu offers three different toppers for ideal sleep, from feather to high-end foam, and a pet package with bed and biscuits. Free rental bikes are available for local cruising, and the general manager will even take a Friday afternoon off to lead guests on a hike around a local park. heathmankirkland.com

McMenamins Anderson School

Part of a Northwest chain that rehabs old buildings into ultra-quirky hotels, the Bothell junior high's old educational roots are still evident—tall classroom windows let light into the guest rooms, many named for old teachers. A tiny bar is tucked into the principal's office, and the old gymnasium is reborn as a movie theater. With several acres of hotel grounds, it's an easy place to wander from firepit to shuffleboard table with a drink from the on-site brewery, though the obvious highlight is the indoor, heated saltwater pool; a tiki lounge overlooks the South Pacific-themed space. mcmenamins.com/anderson-school