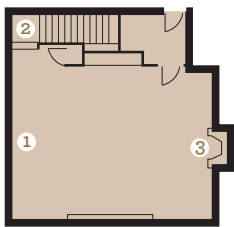


Room	Sq Ft	Dimensions	Ceremony	Cocktail Style Reception	Buffet Dinner	Plated Dinner
Salish Ballroom	2,052	35x58	125	160	125	125
Falls Terrace	1,000	29x31	84	80	68	64
Falls Terrace + Potlatch	1,924	-	-	80	120	120
Falls Terrace + Potlatch + Patio	2,724	-	-	125	120	120
Atrium	630	30x20	40	40	36	40
Wine Cellar Room	600	24x23	40	35	32	40
Cliffside Room	400	30x12	30	24	18	24
River View Suites	200	11x18	-	12	-	-
Hidden Terrace	440	40x11	40	28	28	28
Chef Studio	200	11x18	ask for details	24	-	12



Wine Cellar Room

Second Floor

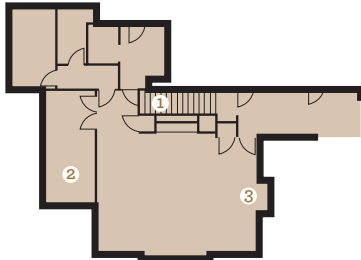
1. White-Board & Pull-Down Screen
2. To Atrium
3. Fireplace



Salish Ballroom

Second Floor

1. Ballroom Foyer
2. Elevator



Atrium

Third Floor

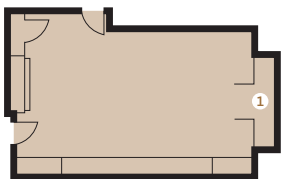
1. To Vintage room
2. Patio
3. Fireplace



Potlatch

Third Floor

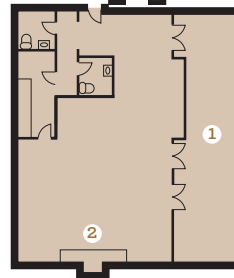
1. Door access to The Dining Room
2. Door access to Falls Terrace



Cliffside Room

Fourth Floor

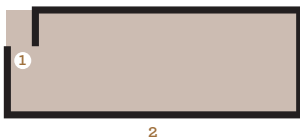
1. Balcony Overlooking Falls



Falls Terrace

Third Floor

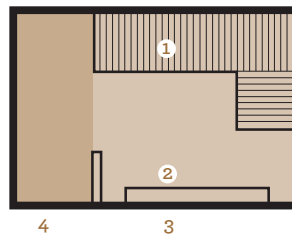
1. Patio Overlooking Snoqualmie River Gorge
2. Fireplace



Hidden Terrace

First Floor

1. Guest Entrance
2. Snoqualmie Falls



Chef's Studio

First Floor

1. Stairs to The Dining Room
2. Retractable Glass Doors
3. Patio Overlooking Snoqualmie Falls
4. Salish Garden

For rates and information please contact a Sales Manager at:
sales@salishlodge.com
 Or call toll-free: 1.800.2.SALISH